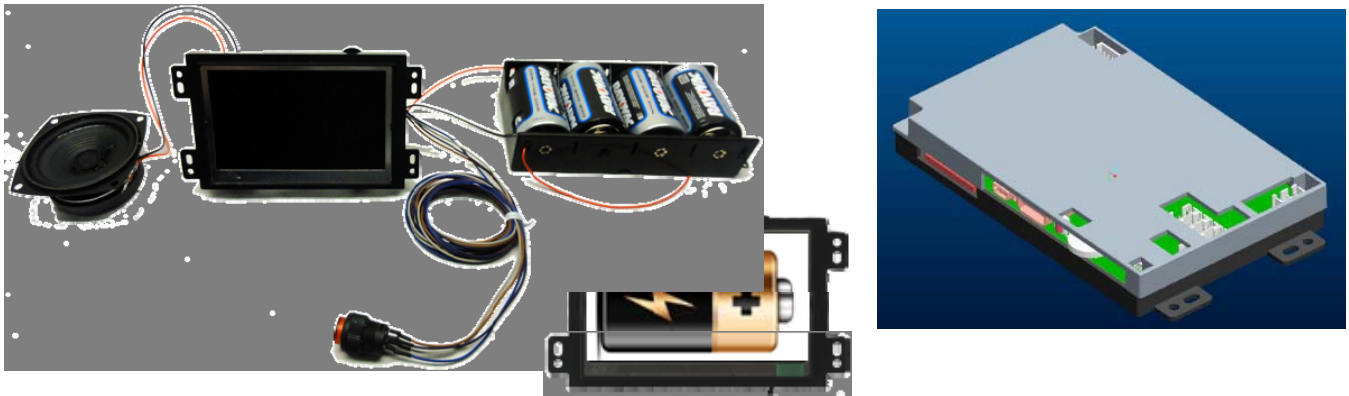


Battery-Driven 4.3" OpenFrame VideoScreen

Commercial-Grade Retail Solution That Supports Months Of Operation Without Maintenance



The 7" Openframe Media Player(OP4300) is a smart-designed video display with super low power consumption to **less than 100mA working current**, its openframe can be easily integrated into existing chassis, Kiosk, product display, shelf-edge or any other type of product presentation. The frame is made out of plastic so it could be installed fully electronically isolated if needed. It is also optional with motion sensor, push buttons, lift sensor, capacitive touch button to **manage the battery power**.

- > Easy integration in to exisiting chassis
- > Loop / Auto Playback Mode (AC Adapter);
- > Standby (screen off) + User Activated Video Play Once Then Return To Standby (Battery Power);
- > USB Auto-Copy Conent Update(optional)
- > Interactivity Via Motion sensor, Push Buttons, lift sensor, capacitive touch button
- > Support both battery mode & AC adapter mode

Playable Formats

MPEG-1 Video
MPEG-2 Video MP@HL
MPEG-4 Video DVIX
AVI Video
Up to 720x576 pixels (for power saving reason)

Playback Functions

Programmable playback : Loop, Auto and Program mode with video trigger (selector button,motion sensor, lift sensor, capacitive touch button)

LCD Panel Information

Screen size : 4.3" (Diagonal)
Active area : 95.04(W)×53.856(H) mm
Max. Resolution : 480 (H) x 272 (V)
Brightness : 250 cd/m2
Contrast ratio : 500 : 1
Viewing angle :45/45/25/35(L/R/U/D)
Aspect Ratio: 16:9

Interface

Card Slot: SD
USB: USB 2.0 Host
Power Jack: 5V /1A DC in
Push button: 4-pin, Molex, Up to 4pcs
Volume knob: V+ /V-
Headphone: 3.5mm audio output

Audio

Audio Format: MP3
Stereo Output: Speakers, 2x1W/8Ω

Video Resolution

Video :720x576 pixels
Recommended format: .avi (Xvid encoder)

Photo

Photo Format: JPEG
Playmode: Auto Slideshow With Adjustable Interval

Options

Interactivity: Motion sensor, Push Buttons
USB Auto Copy (optional)

Working Conditions

Operating Temperature:0°C to 50°C
Relative Humidity : 5% – 95% (Non-Condensing)

Storage

USB or SD card, or Built-in Memory On-board (Optional)

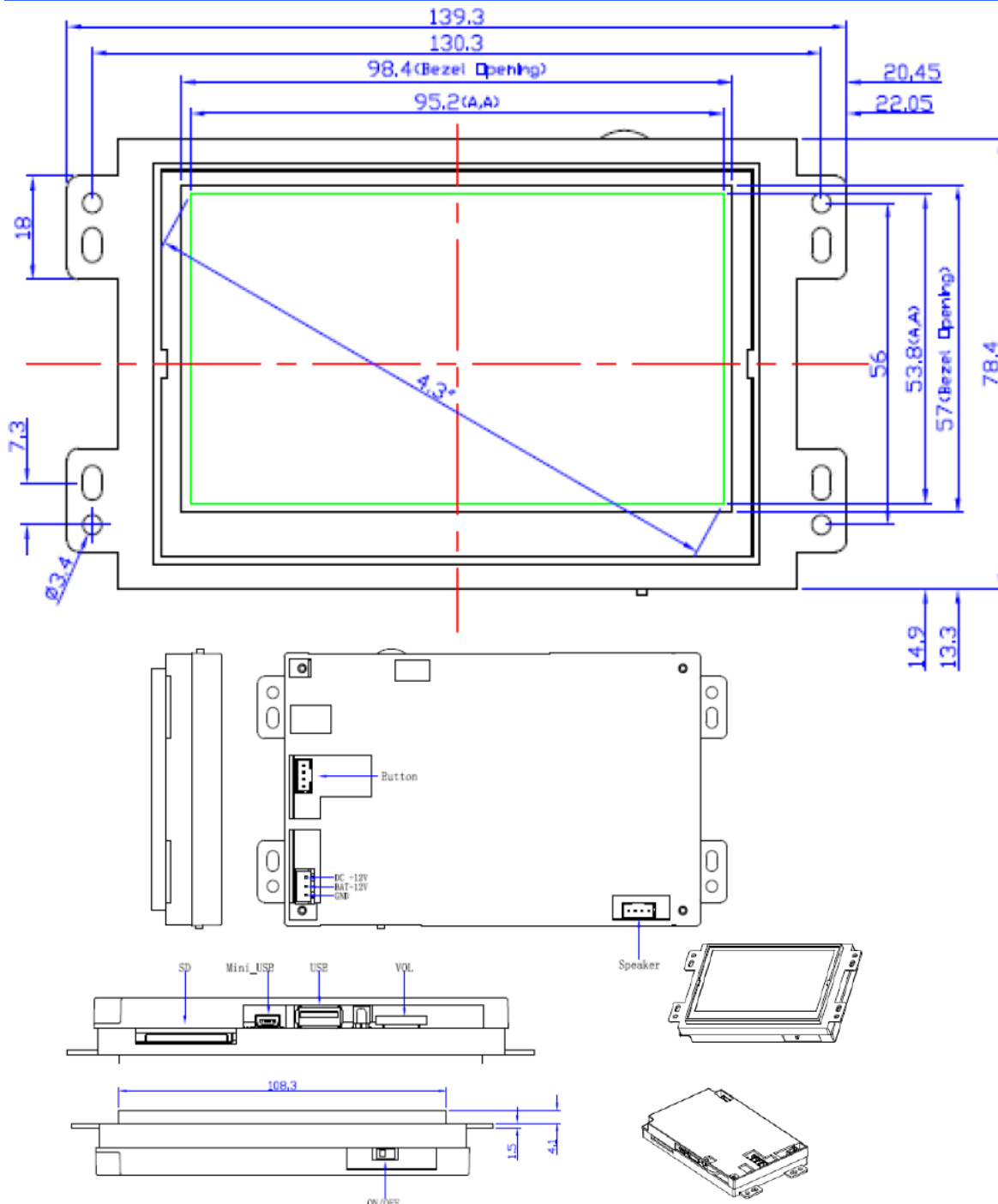
Shipping Info

W x D x H : 139.3x78.4x21mm
Weight: 0.4Kgs

Battery-Driven 4.3" OpenFrame VideoScreen

Commercial-Grade Retail Solution That Supports Months Of Operation Without Maintenance

Mechanical Drawings



Ordering Options:

Player Console: 4.3 inch openframe video player
 AC Adatper: 5V /1A
 Push Button: 5V LED Plastic / Metallic
 Motion Sensor: 120 degrees / 1.8 Meters

Power Data & Battery Pack Options:

Number of plays of 20sec video	4D	8D	12D	24D
4.3" Mini Display	5400	8775	17550	35100
7" Shelf-edge Display	-	7020	10800	21600
10" Shelf-edge Display	-	3132	5090	10179

Retail Field Operation Analogy

4.3": Video triggered every 5 minutes(8 hours per day, 90 days)