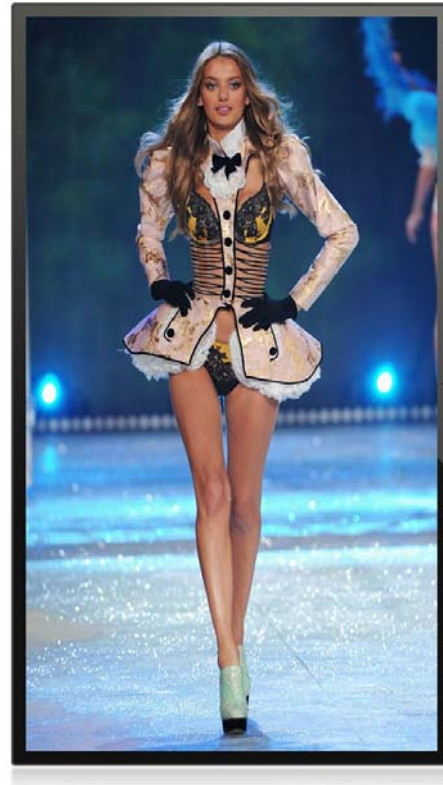
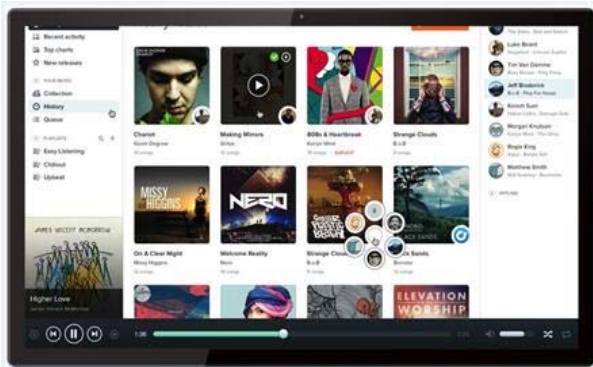


- > Commercial Tablet
- > Boxed Media Player
- > OpenFrame & All-in-One 1080P Player
- Point-of-Sale ● Industrial ● Commercial

55" Commercial Video Monitor

Strong Video Processor With Full HD 1920x1080 pixels 55"LCD panel

Model No.:MP5500



Commercial-Friendly

high-brightness 300 Nits commercial display;
Full viewing angle to reach widest audience at front ;
Rugged metallic housing with super narrow bezel;
Super Slim & Compact, more slim than plastic housing;
Video Loop or default video + triggering video or audio;
Customization options with design-in support

LCD Panel Information

Screen size:55 inch diagonal;
Display Type:TFT-LCD Full Viewing Angle screen
1920*1080 pixels;
Viewing Angle:178°(H)178°(V);
Backlight type:LED;
Aspect ratio: 16:9;
Brightness:350cd/m2;
Contrast Ratio:4000:1;

Touchscreen (optional)

60-Point metal mesh touch screen

Options

Interactivity: Motion Sensor, Push Buttons

Hardware

Processor : Mstar V59;

Interface

Card Slot: SD Card;
USB: USB 2.0 Host x1, Mini USB OTG x1;
Power Jack: 19.5V /4A DC in
RJ45: 1
Audio: 3.5mm Earphone Port;
HDMI in: HDMI 1.4 x1;

Video

MPEG-1,MPEG-2,MPEG-4,H.263,H.264,H.265, RV etc.,support up to 3840x2160 @ 60fps

Audio

Audio Format: MP3/WMA/AAC
Stereo Output: Speakers, 2x5W/8Ω

Photo

Photo Format: JPEG/BMP /PNG

Working Conditions

Operating Temperature:0°C to 50°C
Relative Humidity : 5% - 95% (Non-Condensing)

- > Commercial Tablet
- > Boxed Media Player
- > OpenFrame & All-in-One 1080P Player

● Point-of-Sale ● Industrial ● Commercial

55" Commercial Video Monitor

Strong Video Processor With Full HD 1920x1080 pixels 55"LCD panel

Model No.:MP5500

Connectivity

N/A

Shipping Info

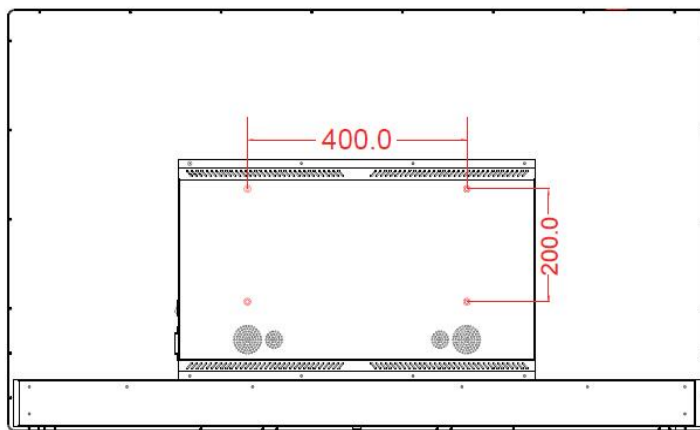
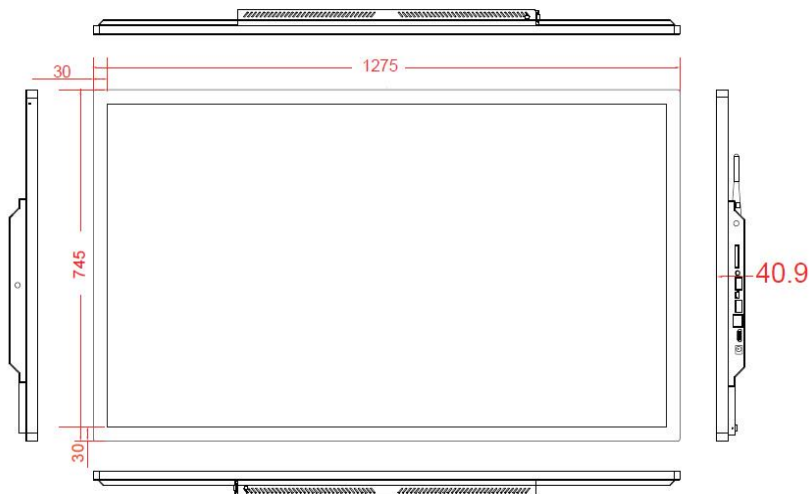
W x D x H (unit) : 1275x745x40.9mm

Qty / Carton: 1pc G.W. :35kgs

Ordering Options:

Display Console: 55 inch Video Player

AC Adatper: 19.5V /5A



Push button



Motion Sensor